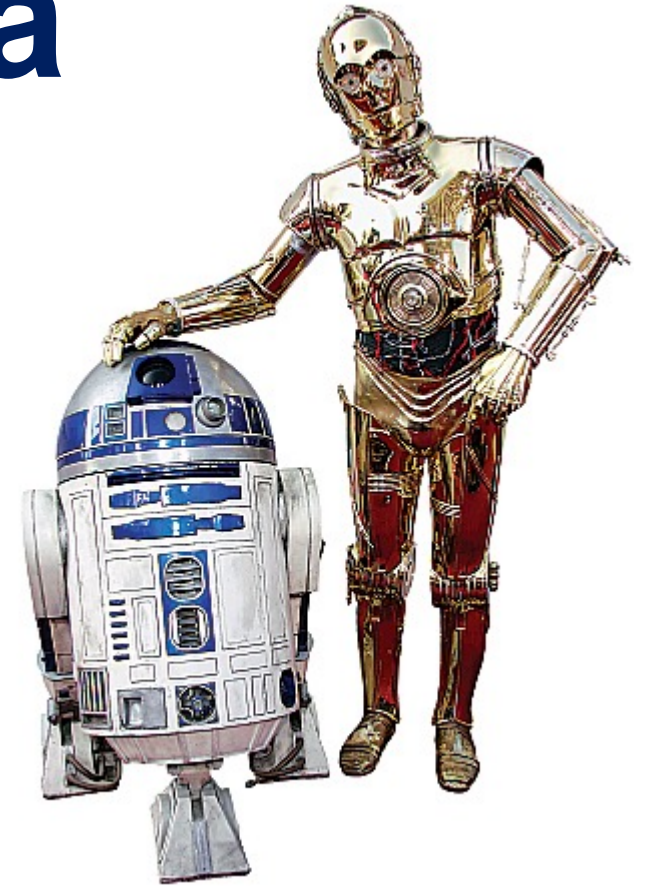
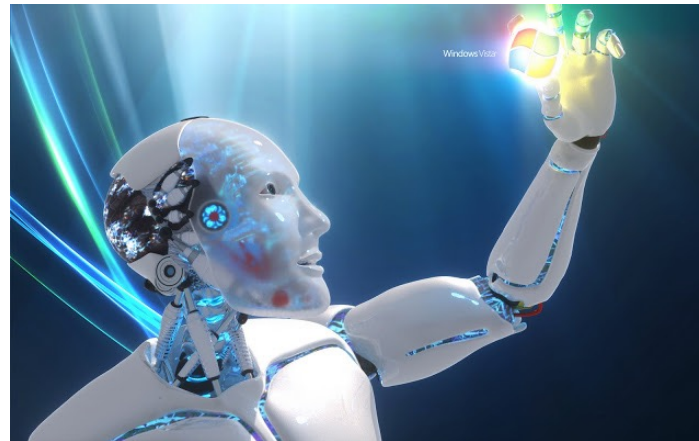




Science and
Technology
Facilities Council

What is a robot?



Last updated: April 2024 (daniel.westwood@stfc.ac.uk)



A robot is :

A machine capable of carrying out a complex series of actions automatically, especially one programmable by a computer.

Any automatically operated machine that replaces human effort, though it may not resemble human beings in appearance or perform functions in a humanlike manner.

A device that automatically performs complicated, often repetitive tasks.

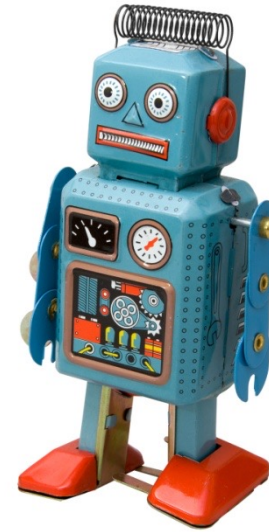
What sort of jobs can robots do better than humans?



What rules do we need to prevent robots from harming humans?

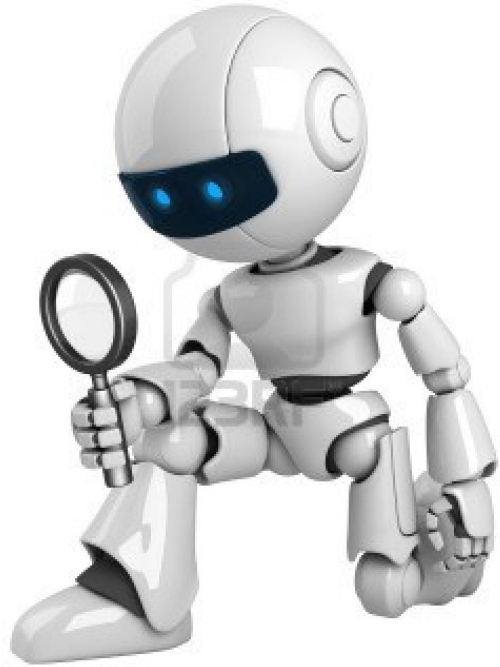


**When people are
out of work, why
do we need
robots?**



How can we tell if a robot is intelligent?





Can a robot commit a crime?



Science and
Technology
Facilities Council

Thank you

Facebook: Science and
Technology Facilities Council

Twitter: @STFC_matters

YouTube: Science and
Technology Facilities Council